


HARRIS FIRE

CA-MVU-010427
 as of 10/26/07 - 0600 Hrs
 84,300 Acres 20% Contained
 Started October 21, 2007 0930 Hrs
 San Diego County

Fire Threats and Damages
 97 Residences Destroyed
 2 Commercial Property Destroyed
 17 Outbuilding Other Destroyed
 250 Residences Damaged
 1,500 Residences Threatened

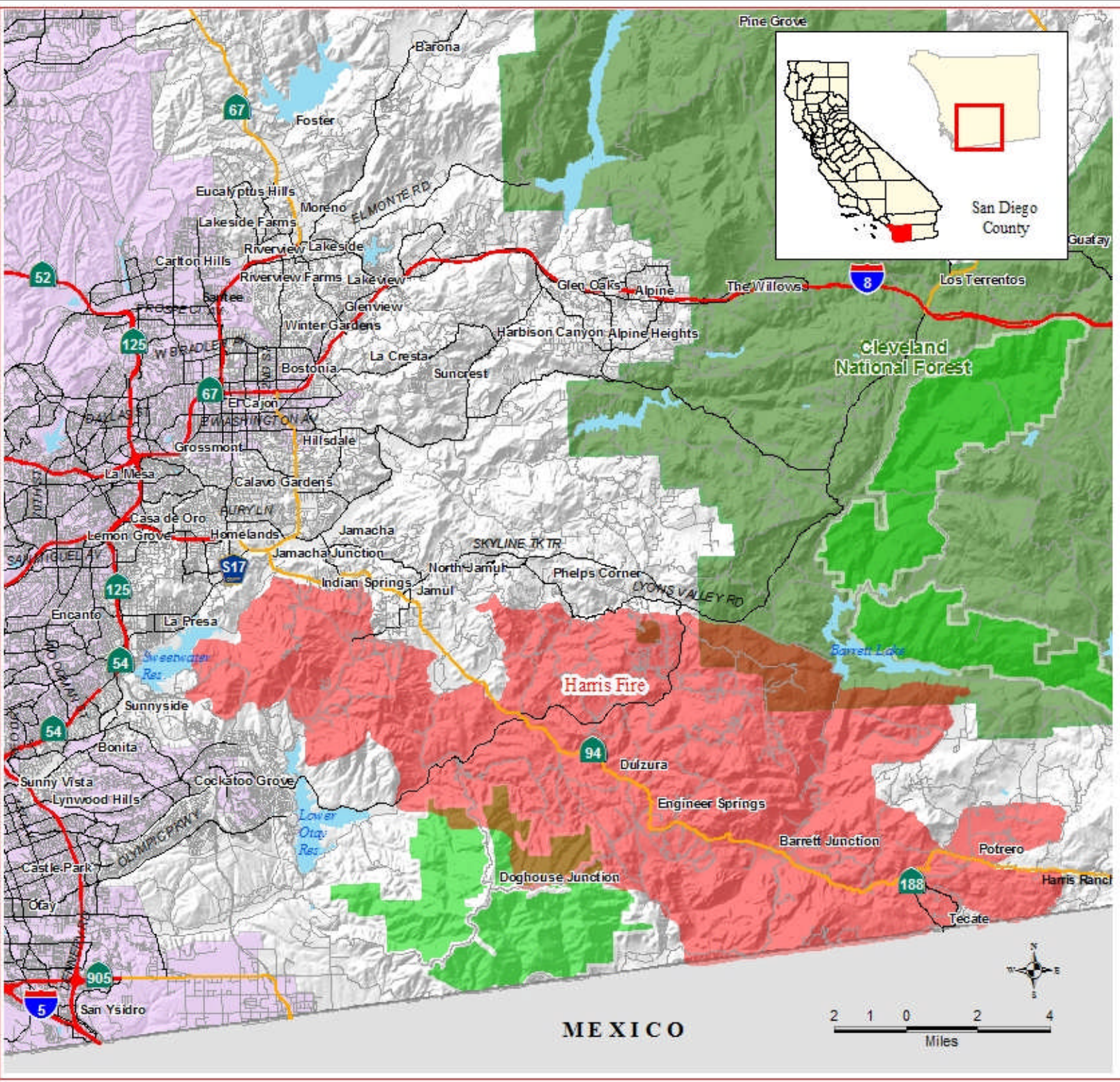
12 hours: High-voltage power grid, Potrero, Barrett Junction, Barrett Lake area, Engineer Springs, Dulzura, Deerhorn Valley, Lawson Valley, Jamul, Lyons Valley
 48Hrs: Moreno and Campo.

Fire Perimeter

 Fire Perimeter as of 10/25/07 at 2000

Transportation Network

-  Freeway
-  Highway
-  Primary
-  Secondary
-  Residential Roads
-  Lake
-  Incorporated City Limits
-  Wilderness Area
-  National Forest Boundary



MEXICO

Created by OES-GIS, Dallas
 October 26, 2007
 Source: FAMWES 109s
 active_incidents/fires/2007/
 Southern_California_Wildfires/projects/
 102607_Harris_102607_AM.mxd

